

Standard Layout

SCM-PWR6 with SCM-LC-N2K-PLUS & 6 Single Color Lights



OPERATION

Control up to six single circuits through the Shadow-Caster interface or native digital switching user interface in the MFD.

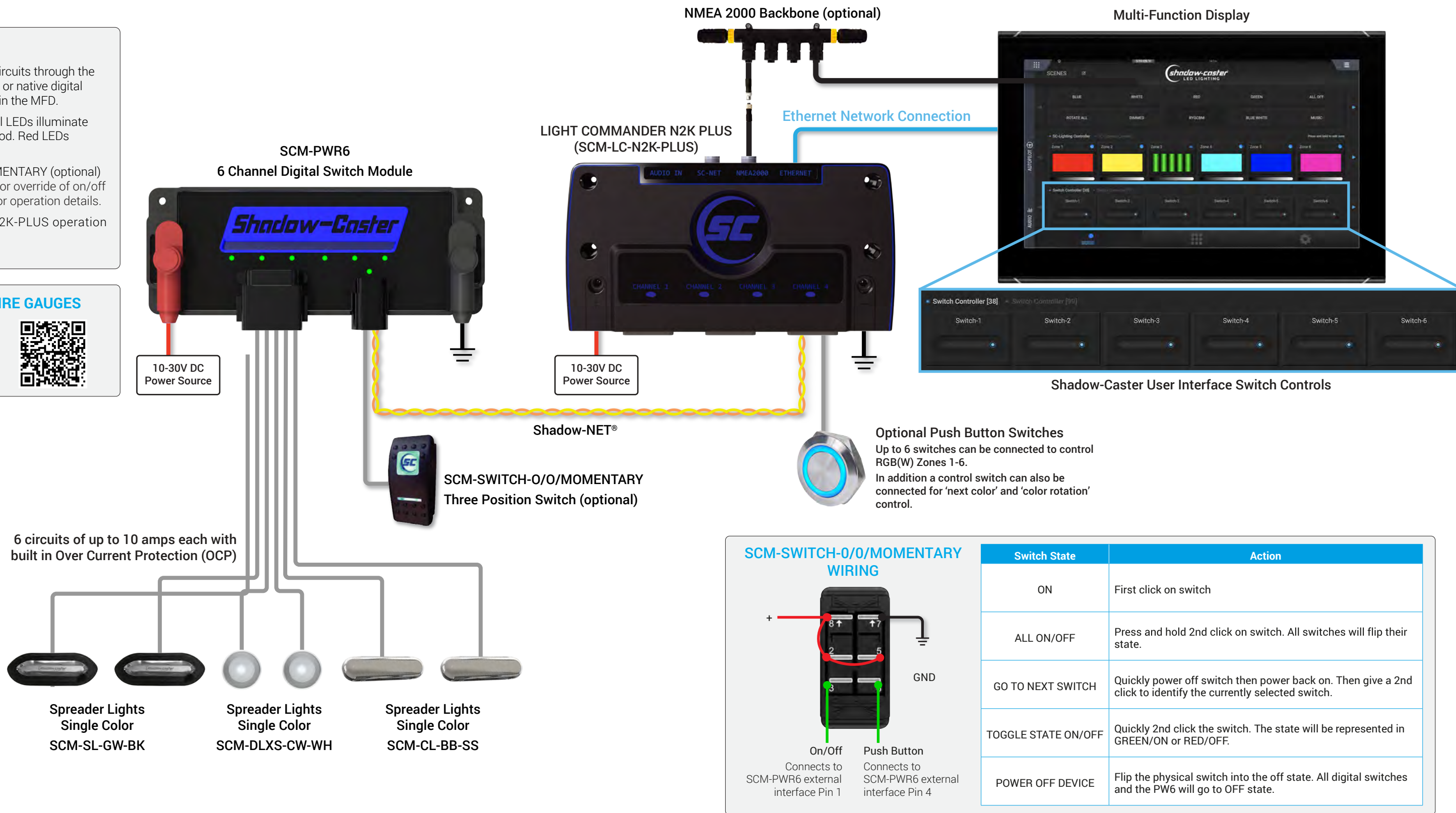
SCM-PWR6 - Six channel LEDs illuminate green when output is good. Red LEDs indicate an output fault.

SCM-SWITCH-O/O/MOMENTARY (optional) Three Position Switch - for override of on/off functions. See manual for operation details.

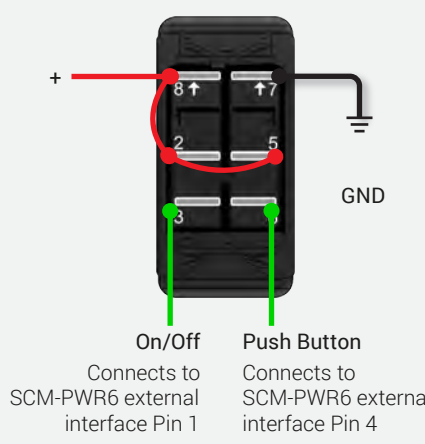
To view the SCM-LC-N2K-PLUS operation manual click [here](#).

RECOMMENDED WIRE GAUGES

Scan the QR code or click [here](#) to view our recommended wire gauge chart.



SCM-SWITCH-O/O/MOMENTARY WIRING



Switch State	Action
ON	First click on switch
ALL ON/OFF	Press and hold 2nd click on switch. All switches will flip their state.
GO TO NEXT SWITCH	Quickly power off switch then power back on. Then give a 2nd click to identify the currently selected switch.
TOGGLE STATE ON/OFF	Quickly 2nd click the switch. The state will be represented in GREEN/ON or RED/OFF.
POWER OFF DEVICE	Flip the physical switch into the off state. All digital switches and the PW6 will go to OFF state.