

SCM-DAL™ SERIES

MINI-NEON DIGITAL LIGHTING STRIP



DESCRIPTION

Shadow-Caster® LED Lighting offers their Digitally Addressable Lighting (DAL) color-changing LED accent lighting strip for those that want to elevate their boat or outdoor lighting projects. Users are no longer confined to one color for the entire strip. Each LED can be controlled differently, which allows endless dynamic multi-color and motion effects.

The Shadow-Caster strips utilize a WS standard for controlling and must be paired with a compatible Shadow-Caster® Digital LED Controller (SCM-DLC) to operate. When coupled with the Light Commander product, the user can utilize the on-screen control or Shadow-Caster Lighting app to create endless patterns and scenes for dynamic control.

SPECIFICATIONS

- IP67 waterproof design
- 24" of four conductor wire for integrated neon diffuser for smooth continuous light output
- Color coded wires for ease in installation (Yellow wire - Digital Communications, Brown wire - +12 Volt Positive, White wire - Ground)

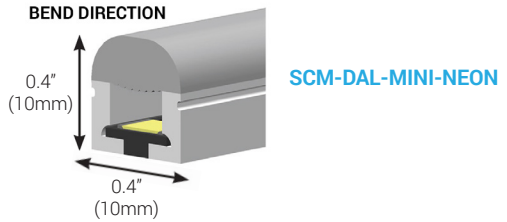
RECOMMENDED CONTROLLERS

- Simple single switch control with the SCM-DLC
- MFD control can be accomplished through use of a Shadow-Caster SCM-DLC connected to a Light Commander

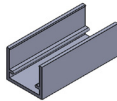
INCLUDES:

- LED Lighting Strip
- Recommended clips
- 3 year standard warranty

PRODUCT BEND DIRECTIONS SHOWN BELOW



OPTIONAL LED STRIP MOUNTING TRACKS
ALUMINUM SCM-AL-MINI-TRACK-AL-1M
WHITE HDPE SCM-AL-MINI-TRACK-HDPE-1M
SHOWN: 1 Meter, hdpe, snap-in



*HDPE available in custom lengths

SPECIFICATIONS	SCM-DAL-MINI-NEON-16
LEDs per meter	120
Cut Segments	25mm (3 LEDs/segment)
Power	19 Watts/Meter
Current draw	1.6 Amp/m
Dimensions	0.4" X 0.4" (10mm x 11mm)
Voltage	12V Only
Color	RGB
Jacket Material	Silicone
Beam Angle	120
Operating Temp	-30 -60°C Ambient temp. (Ta)
Lead Wire	24" (.6 meter)
Bend Radius	1" (25mm)
Available Lengths "XX"	16' (5m)
Clips	1 per ft (17 total)
End Caps	1 Pair
PCB Color	White



Designed & Manufactured in Clearwater, FL

© 2021 Shadow-Caster® LEDs. All Right Reserved.

Shadow-Caster® LED Lighting | 2060 Calumet Street | Clearwater, FL 33765

p: +1 727.474.2877 e: info@shadow-caster.com w: shadow-caster.com