

CLS

RGBW/COOL WHITE LED COURTESY LIGHT W/ TOUCH CONTROL



▶ **MODELS: SCM-CLS-RGBW-SS & SCM-CLS-CW-SS**

▶ **THEORY OF OPERATION**

The Shadow-Caster SCM-CLS is a small courtesy light that has an integrated back lit touch switch. This feature makes it easy to locate the switch and no moving parts making this light IP67 and extremely reliable. When integrated with a Shadow-NET® control system, the light can seamlessly manage the entire connected lighting zone.

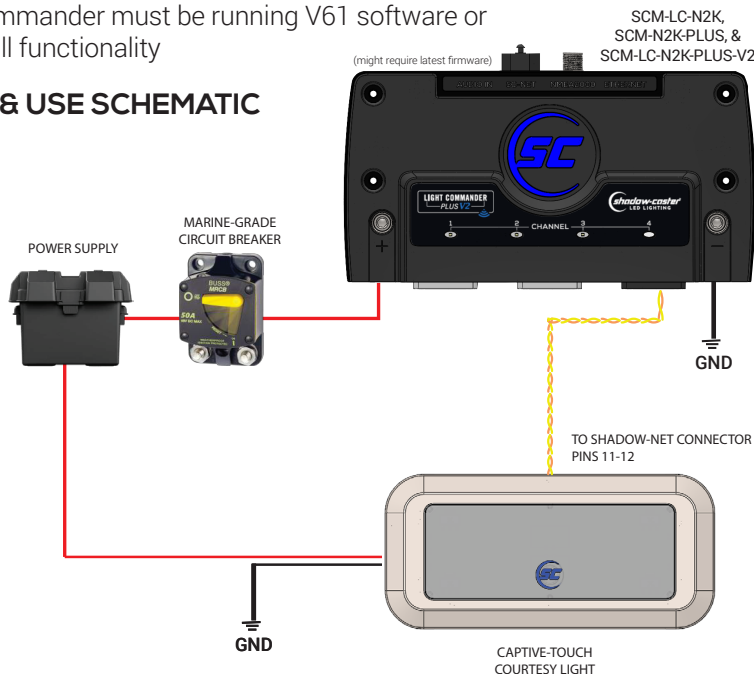
▶ **OPERATION (STAND-ALONE)**

- When power is applied to the CLS Courtesy Light, the brightness slowly ramps up to full power over approximately 2 seconds.
- Toggle power to change the color (RGBW only).
- Touch button (backlit area) to turn the light on and off. Press and hold to adjust brightness.

▶ **OPERATION (SHADOW-NET CONNECTED TO A LIGHT COMMANDER CONTROL SYSTEM)**

- Assign the CLS to a desired lighting zone through the Light Commander user interface.
- Use the backlit touch sensor for ON/OFF control of the CLS and any additional lights assigned to the same lighting zone as the CLS.
- Light Commander must be running V61 software or later for full functionality

▶ **WIRING & USE SCHEMATIC**



▶ **INSTALLATION**

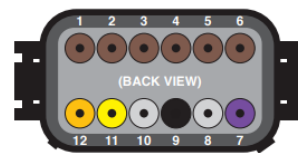
- Drill mounting holes according to template provided
- Connect power and ground and optional Shadow-NET
- Put a 1/8" size ball of silicone sealant in screw holes before mounting
- Screw in light
- Snap stainless steel bezel over the light.

▶ **SPECIFICATIONS**

- *Only for nominal 12VDC applications. Contact Shadow-Caster.com for alternatives for 24Volt systems
- Up to 400 lumens of white light
- 12VDC, 300mA max current
- Stainless steel 316 polished cover
- IP67 waterproof design
- 4.25" x 2" x 0.3" [107.8 x 50.7 x 7.6mm]
- 160° diffuse output

▶ **CLEANING INSTRUCTIONS**

- Clean with soap and water with a soft towel or sponge



Connector 3 Pin Outs		
Pin	Description	Wire Color
1	+ Input SW Zone 1	
2	+ Input SW Zone 2	
3	+ Input SW Zone 3	
4	+ Input SW Zone 4	
5	+ Input SW Zone 5	
6	+ Input SW Zone 6	
7	+12V Color Control Input	
8	Not used	N/A
9	Ground	
10	Not used	N/A
11	Shadow-NET CAN-H (Yellow)	
12	Shadow-NET CAN-L (Orange)	

LIGHT COMMANDER SHADOW-NET CONNECTOR PINS



Designed & Manufactured in Clearwater, FL
© 2024 Shadow-Caster® LEDs. All Right Reserved.

Shadow-Caster® LED Lighting | 2060 Calumet Street | Clearwater, FL 33765
p: +1 727.474.2877 e: info@shadow-caster.com w: shadow-caster.com

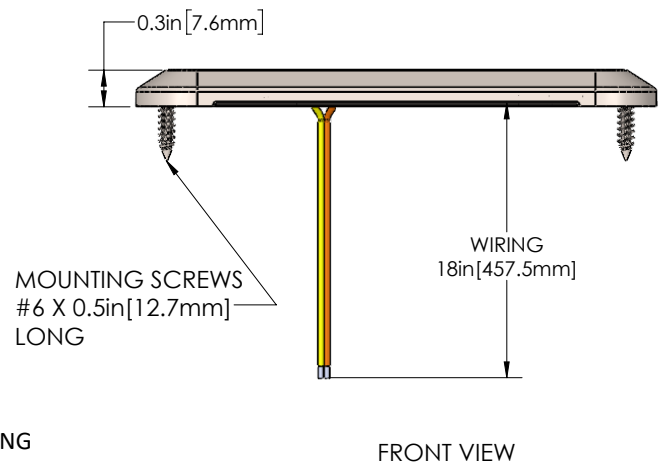
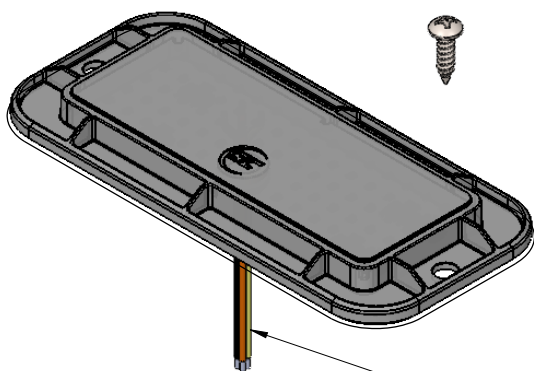
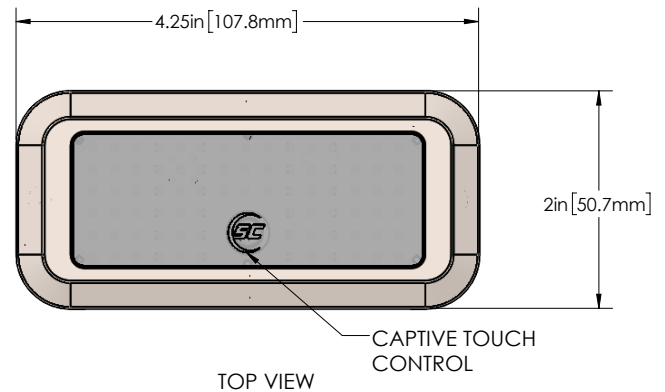
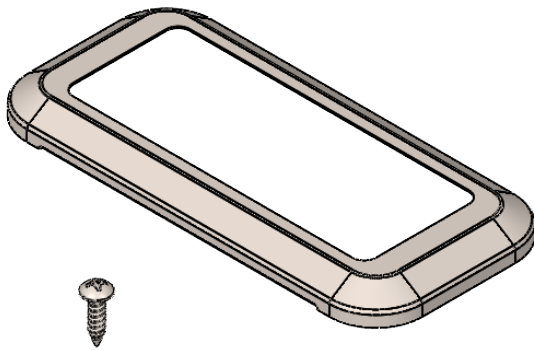
CLS

RGBW/COOL WHITE LED COURTESY LIGHT W/ TOUCH CONTROL



MOUNTING INSTRUCTIONS

1. Select a flat and easily accessible surface on your vessel where the CLS Courtesy Light can be securely mounted.
2. Clean the mounting surface to remove any debris or contaminants that could affect adhesion or sealing.
3. Print the provided template to mark the screw holes and the hole for the wiring.
4. Drill the necessary holes according to the template. Be sure to drill carefully to avoid damaging the surrounding area.
5. Apply a 1/8" size ball of silicone sealant into each screw hole to ensure a watertight seal.
6. Feed the wiring through the center hole.
7. Apply a thin bead of silicone sealant around the edge of the light to create an additional waterproof seal.
8. Position the CLS Courtesy Light over the drilled holes, ensuring it is aligned properly.
9. Insert the screws into the pre-drilled holes and tighten them securely to hold the light in place.
10. Check that the light is securely mounted and the sealant is evenly applied.
11. Wipe away any excess sealant for a clean finish.
12. Snap the stainless steel bezel over the light.



18in [457.2mm]
4 CONDUCTOR WIRING



Designed & Manufactured
in Clearwater, FL
© 2024 Shadow-Caster® LEDs. All Right Reserved.

Shadow-Caster® LED Lighting | 2060 Calumet Street | Clearwater, FL 33765
p: +1 727.474.2877 e: info@shadow-caster.com w: shadow-caster.com

CLS

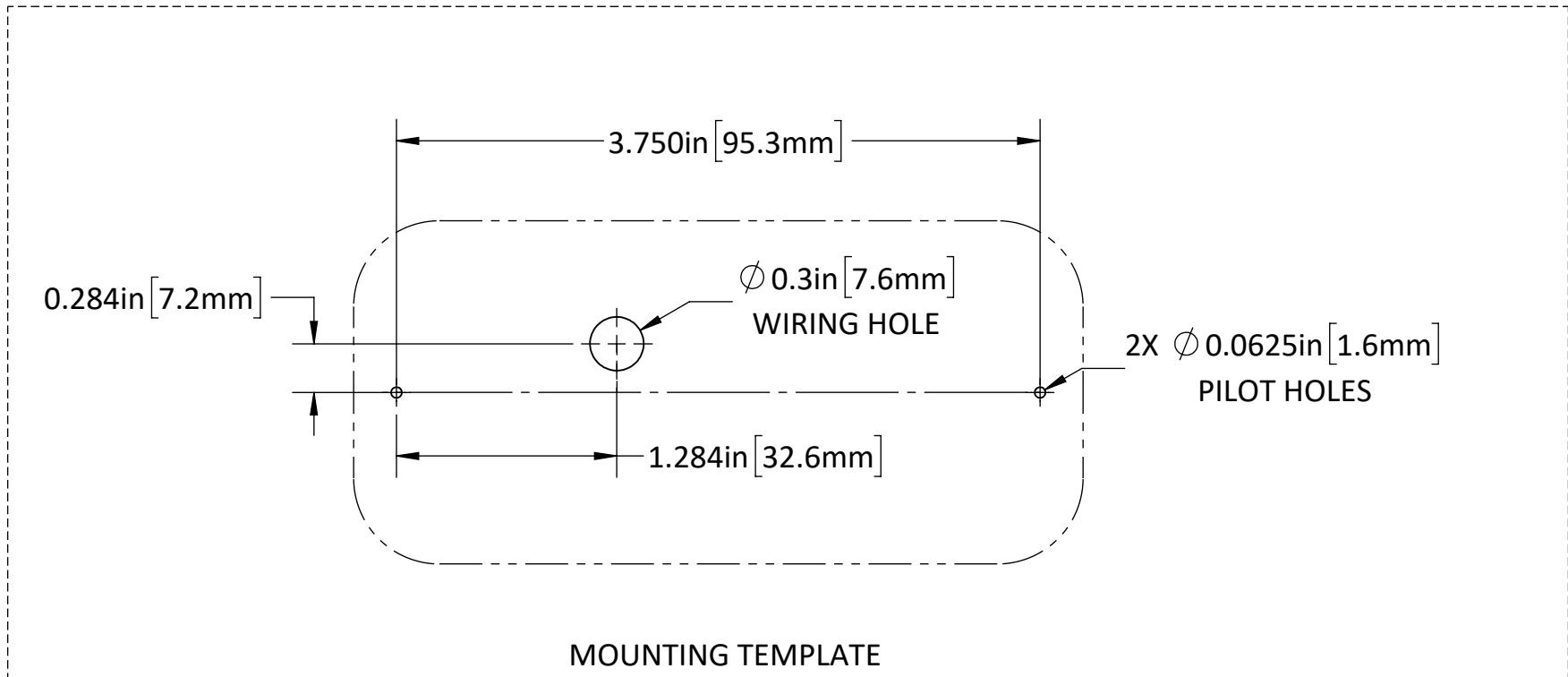
RGBW/COOL WHITE LED COURTESY LIGHT W/ TOUCH CONTROL



▶ **MOUNTING TEMPLATE**

IMPORTANT!

When printing installation templates, please ensure your printer is set to print at 'Actual Size' and double check all printed dimensions exactly match the specified dimensions.



MOUNTING TEMPLATE

PRINT AT 1:1 SCALE



Designed & Manufactured
in Clearwater, FL
© 2024 Shadow-Caster® LEDs. All Right Reserved.

Shadow-Caster® LED Lighting | 2060 Calumet Street | Clearwater, FL 33765
p: +1 727.474.2877 e: info@shadow-caster.com w: shadow-caster.com